

**LINEAR PNEUMATIC ACTUATORS
PA45**

DESCRIPTION

Pneumatic multi-spring linear actuators PA series for modulating and open-close duty, ideal for demanding industrial valve control tasks.

MAIN FEATURES

Direct and reverse action actuators for a maximum of 50 mm valve stroke.

Operation with compressed air, nitrogen or clean water.

OPTIONS: Limit switches.
 Different types of positioners.

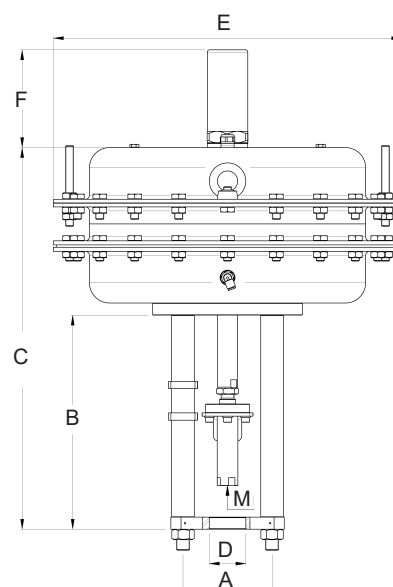
USE: Actuation of V series ADCATrol control valves, or others on request.

MAX.
AIR SUPPLY: 6,5 bar.

AIR CONNECTION: 1/4"

AVAIL. MODELS: PA45.

AMBIENT
TEMPERATURE: -20 °C to 80 °C.



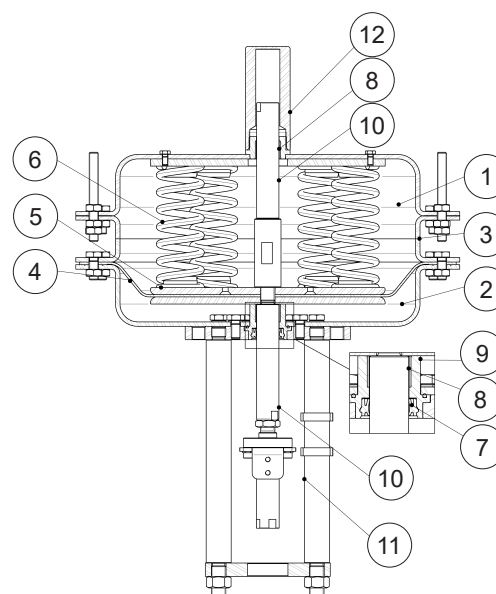
DIMENSIONS (mm)								
MODEL	A	B	C	D	E	F *	M	WEIGHT (kg) **
PA45.B	110	265	473	45	430	121	M16	45
PA45.C	155	272	480	65	430	121	M16	45

* Only for versions with 10, 12 or 14 springs;

** Approximate values, consult manufacturer for certified weights.

MATERIALS		
POS. Nº	DESIGNATION	MATERIAL
1	Top cover	DD12 / 1.0398
2	Bottom cover	DD12 / 1.0398
3	Spacer	DD12 / 1.0398
4	* Diaphragm	Reinforced NBR
5	Diaphragm plate	S235JRG2 / 1.0038
6	Springs	Spring steel
7	* Seal ring	Polyurethane
8	Plain bearing	Steel / PTFE
9	Guide	AISI 304 / 1.4301
10	Stem	AISI 316L / 1.4404
11	Yoke	C45E / 1.1191
12	Cap	C45E / 1.1191

* Available spare parts.



MAX. PERM. PRESSURE DROP (bar) – N.C. (fluid to open) – Reverse action PA45 series actuator (air signal to close)

ACTUATOR TYPE	SPRING RANGE (bar)	STROKE (mm)	AIR SUPPLY (bar)	SIZES					
				DN 65	DN 80	DN 100	DN 125	DN 150	DN 200
PA45.5B	1,1 ÷ 2,1	30	2,5	22	16	10	–	–	–
PA45.8B	1,7 ÷ 3,3	30	3,8	28	24	17	–	–	–
PA45.8C	1,7 ÷ 3,3	40	3,8	–	–	–	6,5	5	–
	1,3 ÷ 3,3	50		–	–	–	5	4	1,5
PA45.10B	2,1 ÷ 4,1	30	4,5	–	–	22	–	–	–
PA45.10C	2,1 ÷ 4,1	40	4,5	–	–	–	8	5	–
	1,6 ÷ 4,1	50		–	–	–	6	3	2,5
PA45.12C	2,5 ÷ 4,9	40	5,5	–	–	–	9	7	–
	1,9 ÷ 4,9	50		–	–	–	8	4,5	3
PA45.14C	2,9 ÷ 5,7	40	6	–	–	–	14	8	–
	2,2 ÷ 5,7	50		–	–	–	10	6	4

Remarks: The pressure drop values must be used within the body rating limits. The pressure drop values refer to closed valves. For different valve strokes, plug designs (perforated and on/off) or other actuators, please consult the respective datasheets or the manufacturer.

ORDERING CODES PA45

Group designation	P.	14	D	A
Multi-spring pneumatic linear actuator	P.			
Actuator size				
PA45.4B		14		
PA45.4C		24		
PA45.5B *		15		
PA45.8B *		18		
PA45.8C *		28		
PA45.10B *		110		
PA45.10C *		210		
PA45.12C *		212		
PA45.14C *		214		
Actuator type				
Direct action (air to close)			D	
Reverse action (air to open)			R	
Control type				
Option A				A
Option B				B

* Reverse action only.

SPRING RANGES (bar)

OPTION	4B, C	5B	8B, C	10B, C	12C	14C
A	0,4 – 4	1,1 – 2,1	1,7 – 3,3	2,1 – 4,1	2,5 – 4,9	2,9 – 5,7
B	–	0,5 – 2,1	1,3 – 3,3	1,6 – 4,1	1,9 – 4,9	2,2 – 5,7